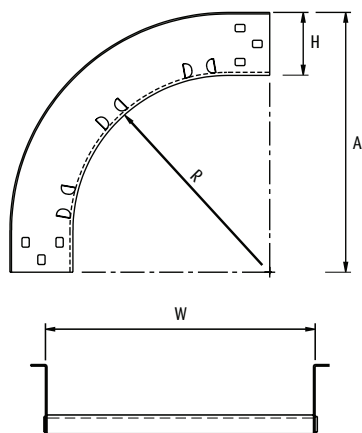


# ACCESORIOS DE DIRECCIONAMIENTO



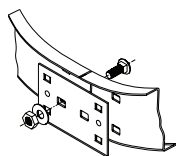
Curva vertical interior

Curva vertical exterior



## Codificación

MV*	- W1	RR	- 90	- **
Tipo de producto	Ancho	Radio de curvatura	° de curva	Características especiales
E	Curva exterior	04	08	(vacío) Peralte 3¼" (83 mm)
		06	12	P4 Peralte 4" (102 mm)
		09	24	P4.5 Peralte 4.5" (114 mm)
I	Curva interior	12	30	P5 Peralte 5" (127 mm)
		16	36	P6 Peralte 6" (152 mm)
		18		E Calibre 16 (Aplica sólo para peralte 3¼")
		20		
		24		
		30		
	36			



Incluye dos conectores rectos y la tornillería requerida para su unión.

## CURVA VERTICAL EXTERIOR E INTERIOR A 90°

Ancho (W)	Radio (R)		Altura (A)		Código		
	mm	pul	mm	pul	Curva exterior	Curva interior	
102	4	203	8	H + 254	H + 10	<b>MVE-0408-90</b>	<b>MVI-0408-90</b>
		305	12	H + 356	H + 14	<b>MVE-0412-90</b>	<b>MVI-0412-90</b>
		610	24	H + 660	H + 26	<b>MVE-0424-90</b>	<b>MVI-0424-90</b>
		762	30	H + 813	H + 32	<b>MVE-0430-90</b>	<b>MVI-0430-90</b>
		914	36	H + 965	H + 38	<b>MVE-0436-90</b>	<b>MVI-0436-90</b>
152	6	203	8	H + 254	H + 10	<b>MVE-0608-90</b>	<b>MVI-0608-90</b>
		305	12	H + 356	H + 14	<b>MVE-0612-90</b>	<b>MVI-0612-90</b>
		610	24	H + 660	H + 26	<b>MVE-0624-90</b>	<b>MVI-0624-90</b>
		762	30	H + 813	H + 32	<b>MVE-0630-90</b>	<b>MVI-0630-90</b>
		914	36	H + 965	H + 38	<b>MVE-0636-90</b>	<b>MVI-0636-90</b>
229	9	203	8	H + 254	H + 10	<b>MVE-0908-90</b>	<b>MVI-0908-90</b>
		305	12	H + 356	H + 14	<b>MVE-0912-90</b>	<b>MVI-0912-90</b>
		610	24	H + 660	H + 26	<b>MVE-0924-90</b>	<b>MVI-0924-90</b>
		762	30	H + 813	H + 32	<b>MVE-0930-90</b>	<b>MVI-0930-90</b>
		914	36	H + 965	H + 38	<b>MVE-0936-90</b>	<b>MVI-0936-90</b>
305	12	203	8	H + 254	H + 10	<b>MVE-1208-90</b>	<b>MVI-1208-90</b>
		305	12	H + 356	H + 14	<b>MVE-1212-90</b>	<b>MVI-1212-90</b>
		610	24	H + 660	H + 26	<b>MVE-1224-90</b>	<b>MVI-1224-90</b>
		762	30	H + 813	H + 32	<b>MVE-1230-90</b>	<b>MVI-1230-90</b>
		914	36	H + 965	H + 38	<b>MVE-1236-90</b>	<b>MVI-1236-90</b>
406	16	203	8	H + 254	H + 10	<b>MVE-1608-90</b>	<b>MVI-1608-90</b>
		305	12	H + 356	H + 14	<b>MVE-1612-90</b>	<b>MVI-1612-90</b>
		610	24	H + 660	H + 26	<b>MVE-1624-90</b>	<b>MVI-1624-90</b>
		762	30	H + 813	H + 32	<b>MVE-1630-90</b>	<b>MVI-1630-90</b>
		914	36	H + 965	H + 38	<b>MVE-1636-90</b>	<b>MVI-1636-90</b>
457	18	203	8	H + 254	H + 10	<b>MVE-1808-90</b>	<b>MVI-1808-90</b>
		305	12	H + 356	H + 14	<b>MVE-1812-90</b>	<b>MVI-1812-90</b>
		610	24	H + 660	H + 26	<b>MVE-1824-90</b>	<b>MVI-1824-90</b>
		762	30	H + 813	H + 32	<b>MVE-1830-90</b>	<b>MVI-1830-90</b>
		914	36	H + 965	H + 38	<b>MVE-1836-90</b>	<b>MVI-1836-90</b>
508	20	203	8	H + 254	H + 10	<b>MVE-2008-90</b>	<b>MVI-2008-90</b>
		305	12	H + 356	H + 14	<b>MVE-2012-90</b>	<b>MVI-2012-90</b>
		610	24	H + 660	H + 26	<b>MVE-2024-90</b>	<b>MVI-2024-90</b>
		762	30	H + 813	H + 32	<b>MVE-2030-90</b>	<b>MVI-2030-90</b>
		914	36	H + 965	H + 38	<b>MVE-2036-90</b>	<b>MVI-2036-90</b>
610	24	203	8	H + 254	H + 10	<b>MVE-2408-90</b>	<b>MVI-2408-90</b>
		305	12	H + 356	H + 14	<b>MVE-2412-90</b>	<b>MVI-2412-90</b>
		610	24	H + 660	H + 26	<b>MVE-2424-90</b>	<b>MVI-2424-90</b>
		762	30	H + 813	H + 32	<b>MVE-2430-90</b>	<b>MVI-2430-90</b>
		914	36	H + 965	H + 38	<b>MVE-2436-90</b>	<b>MVI-2436-90</b>
762	30	203	8	H + 254	H + 10	<b>MVE-3008-90</b>	<b>MVI-3008-90</b>
		305	12	H + 356	H + 14	<b>MVE-3012-90</b>	<b>MVI-3012-90</b>
		610	24	H + 660	H + 26	<b>MVE-3024-90</b>	<b>MVI-3024-90</b>
		762	30	H + 813	H + 32	<b>MVE-3030-90</b>	<b>MVI-3030-90</b>
		914	36	H + 965	H + 38	<b>MVE-3036-90</b>	<b>MVI-3036-90</b>
914	36	203	8	H + 254	H + 10	<b>MVE-3608-90</b>	<b>MVI-3608-90</b>
		305	12	H + 356	H + 14	<b>MVE-3612-90</b>	<b>MVI-3612-90</b>
		610	24	H + 660	H + 26	<b>MVE-3624-90</b>	<b>MVI-3624-90</b>
		762	30	H + 813	H + 32	<b>MVE-3630-90</b>	<b>MVI-3630-90</b>
		914	36	H + 965	H + 38	<b>MVE-3636-90</b>	<b>MVI-3636-90</b>

H = Peralte