



4B
Components
Limited

IE-NODE (Industrial Ethernet Node)

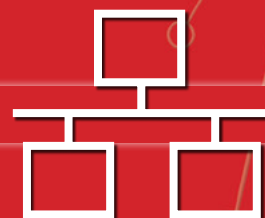
Remote Sensor Monitoring for PLC's & Automation Systems

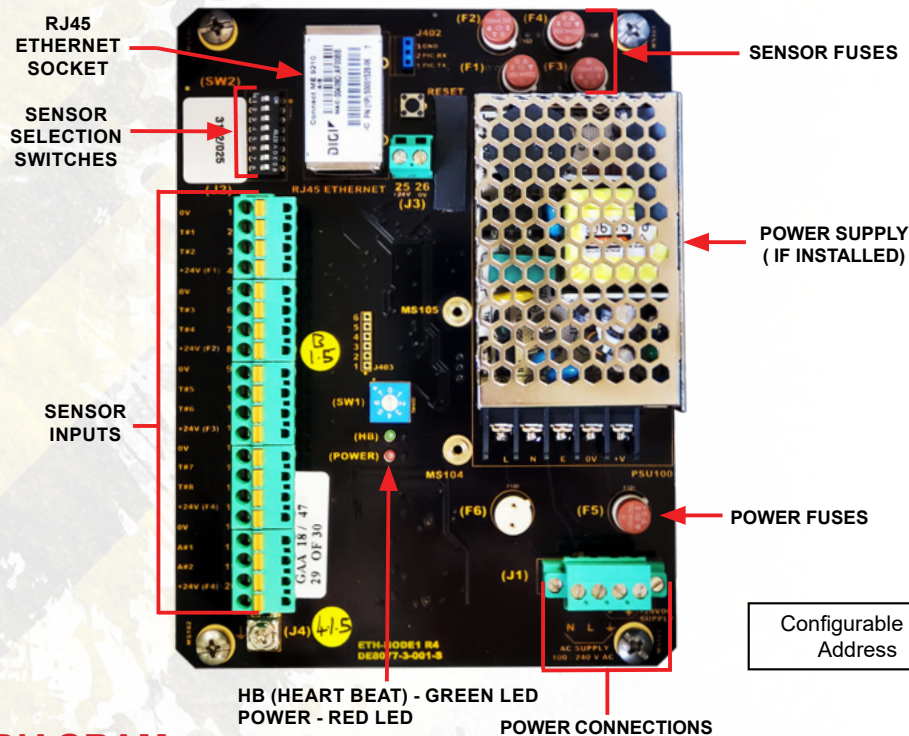
Key Features

- Sensor Interface for PLC's & Automation Systems
- Supports PROFINET, EtherNet/IP and Modbus TCP/IP protocols
- Up to 16 Total Sensor Inputs with Available Expansion Boards
- Configurator Software for Easy Network Set Up and Visual Overview of All Devices

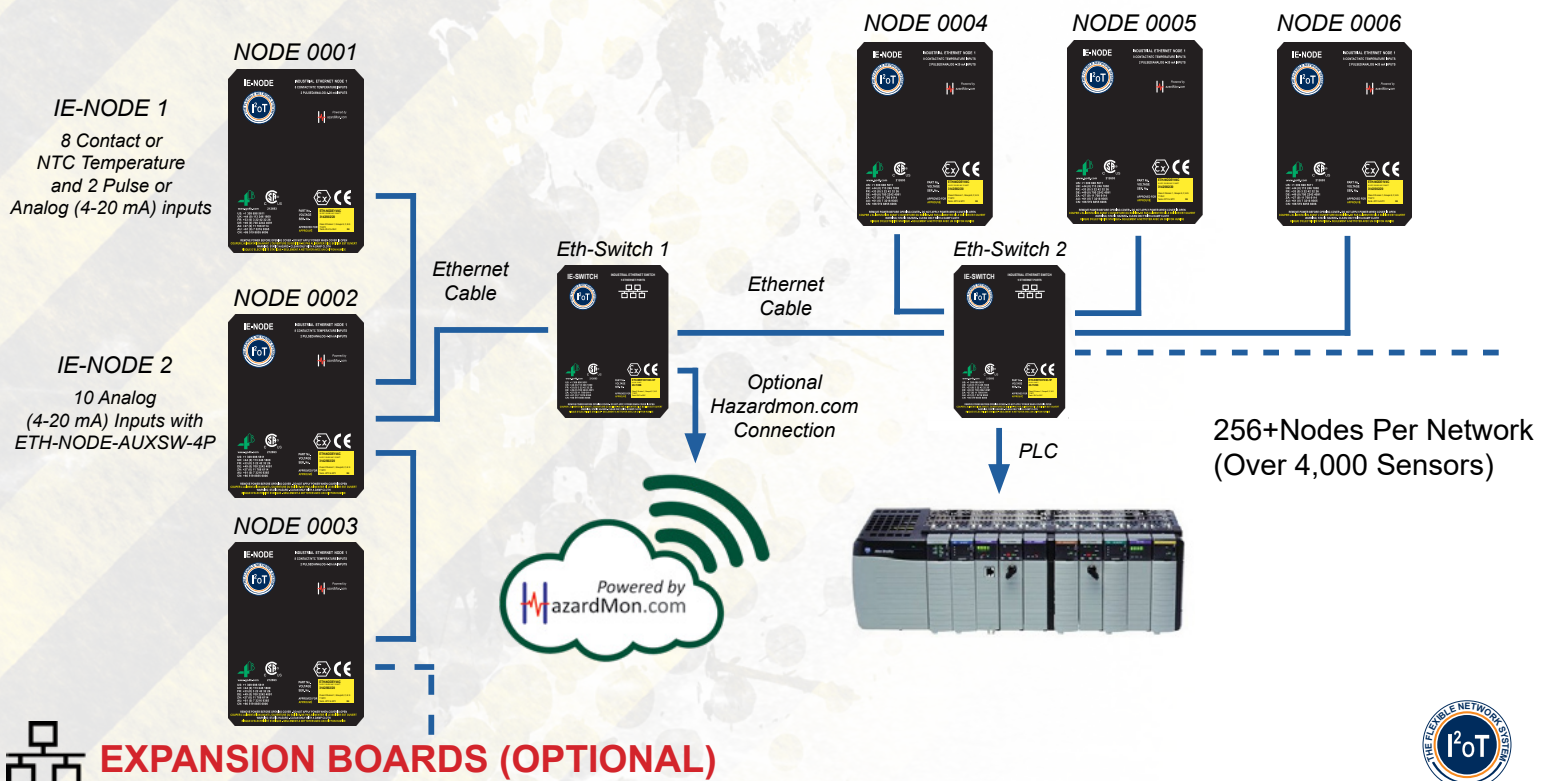


BETTER BY DESIGN





NETWORK DIAGRAM



EXPANSION BOARDS (OPTIONAL)



Expansion boards provide additional features and are available for the IE-NODE to expand total sensor inputs from 10 to 16, allow RS485 Modbus RTU connections and also provide additional Ethernet ports.

1. The ETH-NODE-AUXI-6NTC expansion board allows for the support of up to 6 additional NTC temperature sensors or 6 contact sensors, or any combination of 6.
2. The ETH-NODE-AUXI-6AN expansion board allows for up to 6 additional 4-20 mA (current loop) sensors.
3. The ETH-NODE-AUXSW-4P expansion board provides 4 usable Ethernet ports for expanding the network.



NTC Expansion Board



Ethernet Node Switch Expansion



APPLICATION



The Industrial Ethernet Node (IE-NODE) is a remote monitoring interface designed to provide sensor data to PLC's or other automation and control systems.

The IE-NODE is available in two versions, both with a total of 10 sensor inputs. Version 1 has 8 contact or NTC temperature inputs, and 2 pulse or 4-20 mA (current loop) inputs. Version 2 has 10 inputs for 4-20 mA (current loop) sensors.

Both units can be expanded to 16 sensor inputs with the installation of optional expansion boards.

The IE-NODE operates by reading its sensor inputs and sending processed data when requested by another system (e.g. PLC). The units are equipped with an RJ45 Ethernet socket and supports PROFINET, EtherNet/IP and Modbus TCP/IP protocols for easy integration with Siemens, Allen-Bradley Rockwell, Delta V, Modicon and other PLC's or automation devices.

The IE-NODE's network configurator software provides a visual view of all devices on the network. It allows for easy identification of each unit on the network and allows for network settings to be changed as needed.

PARTS NUMBERS & ACCESSORIES

- ETH-NODE1V46C IE-NODE 1 (120 to 240 VAC / 24 VDC)
- ETH-NODE1V4C IE-NODE 1 (24 VDC)
- ETH-NODE2V46C IE-NODE 2 (120 to 240 VAC / 24 VDC)
- ETH-NODE2V4C IE-NODE 2 (24 VDC)
- ETH-NODE-AUXI-6NTC NTC Expansion Board (6 NTC Input)
- ETH-NODE-AUXI-6AN Analog Expansion Board (6 4-20mA Inputs)
- ETH-NODE-AUXSW-4P Expansion Ethernet Switch (4 Usable Ports)
- ETH-SWITCH1V4C-5P 5 Port Ethernet Switch (24 VDC)

4B IE-Node is compatible with a wide range of sensors. Below is a list of 4B sensors available from stock. If you have another brand of sensor that you would prefer to use please contact the 4B Tech Team at (309) 698-5611.



Industrial Ethernet Switch
ETH-SWITCH1V4C-5P



IE-NODE SENSORS

Class II Div. 1 Groups E, F and G Approved (USA & Canada)

1 Belt Speed -



Speed Sensor
(P8004V10C
or MIL8001V4C)

The P800 is an inductive proximity sensor with a solid state relay and the MilliSpeed provides a 4-20 mA output. It can sense a ferrous metal target on a rotating shaft from up to 1/2" away.

Whirligig® Shaft Sensor Mount
with Mag-Con™ Magnetic Connector

2 Bearing Temperature -



ADB
(ADB20V3C/D3 or
ADBMIL1V4C/D2)

The ADB series are designed to allow the depth of the probe to be adjustable depending on the size of the bearing, and attach using the existing grease zerk threads.

4B Tech Team
professional testing
equipment available
for purchase -



SpeedMaster

ADB & Lug
Tester

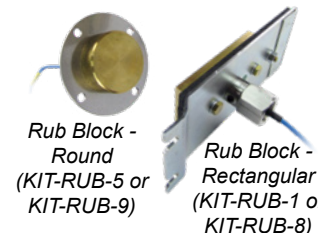


3 Belt Misalignment -



Touchswitch
(TS2V4C)

The Touchswitch has a force activated contact signal. When contact from the belt occurs an alarm is generated.



Rub Block -
Round
(KIT-RUB-5 or
KIT-RUB-9)

Rub Block -
Rectangular
(KIT-RUB-1 or
KIT-RUB-8)

Rub blocks process temperature information. When the belt rubs against the brass block, heat from friction generates an alarm.

4 Plug Indication -



Binswitch Elite
(BSE1V10C)

The Binswitch Elite is a capacitance point plug/level indicator with automatic material build up compensation for bulk granular solids or liquids.

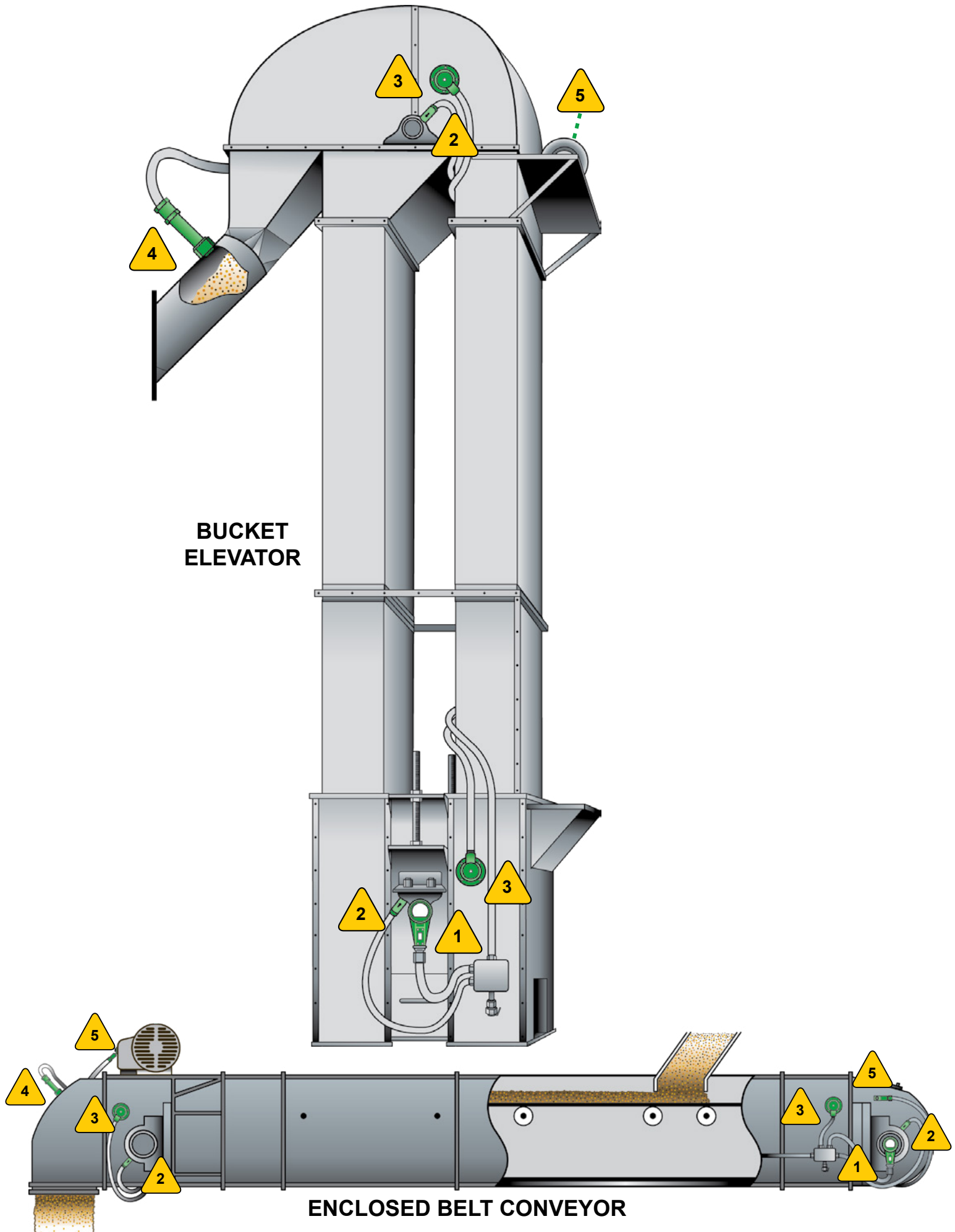
5 Surface Temperature -



Lug Sensor
(KIT-LUG-ADB20
or KIT-LUG-MIL)

The lug sensor mounts to the conveyor housing to detect the heat generated by a pulley misalignment. It can also be used to detect overheating motors and gearboxes.

TYPICAL SENSOR LOCATIONS





Easy order kits for the most common monitoring system configurations are shown below.

For additional kits and options visit: www.go4b.com

BUCKET ELEVATOR KIT-ETH-BE1

Industrial Ethernet Node (ETH-NODE1V4C)

Qty. 1 – Industrial Ethernet Node with 8 contact or NTC inputs and 2 pulse or 4-20 mA inputs



Belt Speed - Milli-Speed (MIL8001V4C)

Qty. 1 - one sensor located on either side of the boot shaft.



Bearing Temperature - ADB Sensor (ADB20V3C/D3)

Qty. 4 - One sensor for the bearings at each end of the head and boot shafts.



Belt Misalignment - Touchswitch (TS2V4C)

Qty. 4 - Sensors work in pairs, one for each side of the belt on the head and boot sections.

OPTIONAL SENSORS



Plug Indication - Binswitch Elite (BSE1V10C)

Qty. 1 - One located near the top of the spouting by the discharge.



Surface Temperature - Lug Sensor (KIT-LUG-ADB20)

Qty. 2 - Monitor for overheating motors and/or gearboxes.

BELT CONVEYOR KIT-ETH-BC1

Industrial Ethernet Node (ETH-NODE1V4C)

Qty. 1 – Industrial Ethernet Node with 8 contact or NTC inputs and 2 pulse or 4-20 mA inputs.

6 NTC Expansion Board (ETH-NODE-AUXI-6NTC)

Qty. 1 – Industrial Ethernet Node Expansion board with 6 additional contact or NTC inputs.



Belt Speed - Milli-Speed (MIL8001V4C)

Qty. 1 - one sensor located on either side of the boot shaft.



Bearing Temperature - ADB Sensor (ADB20V3C/D3)

Qty. 4 - One sensor for the bearings at each end of the drive and tail shafts.



Belt Misalignment - Touchswitch (TS2V4C)

Qty. 4 - Sensors work in pairs, one for each side of the belt on the drive and tail sections.



Tail Pulley Misalignment - Lug Sensor (KIT-LUG-ADB20)

Qty. 2 - One for each side of the housing on the tail section to monitor for pulley misalignment.

OPTIONAL SENSORS



Plug Indication - Binswitch Elite (BSE1V10C)

Qty. 1 - One located near the top of the drive section by the discharge.



Surface Temperature - Lug Sensor (KIT-LUG-ADB20)

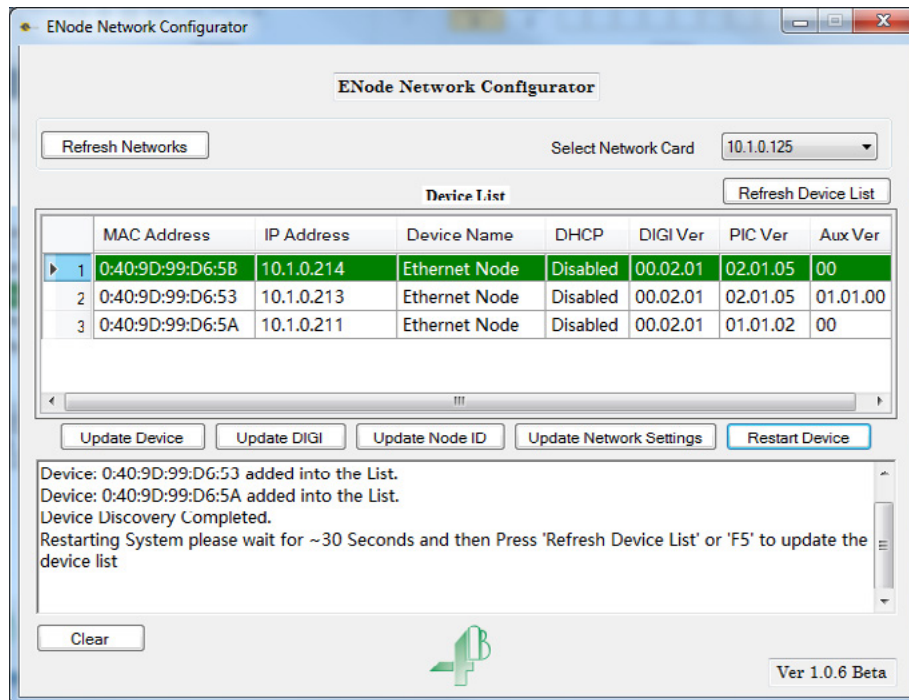
Qty. 2 - Monitor for overheating motors and/or gearboxes.

4B TECH TEAM SERVICE

- Help In selecting Equipment
- On Site Start-Up / Commissioning
- On Site Annual Product Testing
- 24 Hour Tech Support



CONFIGURATION SOFTWARE



The IE-NODE network configurator software provides you with a visual view of all devices on the network. It allows for easy identification for each unit on the network, and allows you to change network settings as needed. Alternatively, the network settings can be configured through the IE-Node built-in web server.

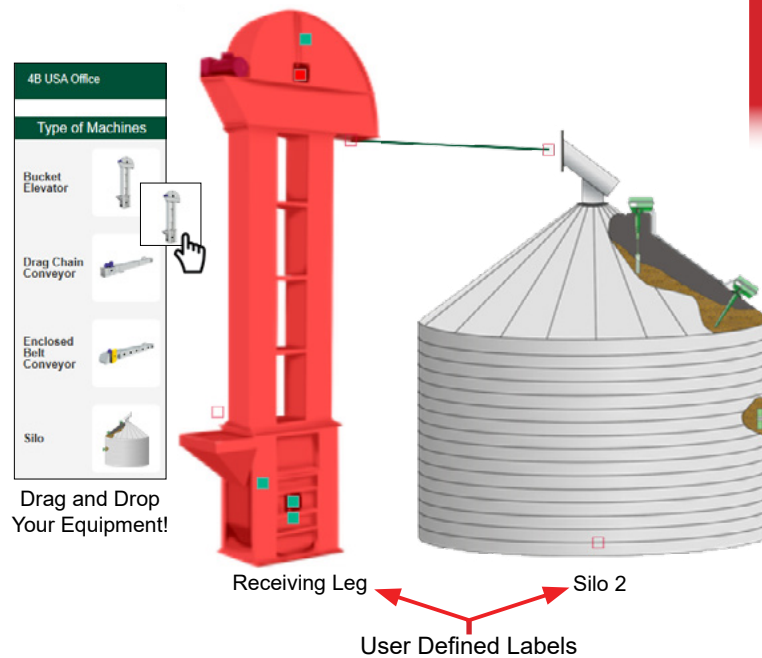


SYSTEM CONFIGURATION SETTINGS



4B Components Ltd. provides free add-on instructions for Allen Bradley PLC's, ControlLogix® and CompactLogix® allowing easily implemented control logic that supports the functionality of the IE-NODE. 4B also has sample code and a GDSML file for easy integration into Siemens SIMATIC S7 PLC's.

Scope: Bucket_Elevator		Show: All Tags			
Name		Value	Force Mask	Style	Data Type
	+ ENodeData[1].ETH_ENODE_1.Temperature[0]	{ ... }	{ ... }		NTC_Inputs
	- ENodeData[1].ETH_ENODE_1.Temperature[1]	{ ... }	{ ... }		NTC_Inputs
	- ENodeData[1].ETH_ENODE_1.Temperature[1].Temperat...	69.2		Float	REAL
	- ENodeData[1].ETH_ENODE_1.Temperature[1].ShortCircuit	0		Decimal	BOOL
	- ENodeData[1].ETH_ENODE_1.Temperature[1].OpenCirc...	0		Decimal	BOOL
	- ENodeData[1].ETH_ENODE_1.Temperature[2]	{ ... }	{ ... }		NTC_Inputs
	- ENodeData[1].ETH_ENODE_1.Temperature[2].Temperat...	69.3		Float	REAL
	- ENodeData[1].ETH_ENODE_1.Temperature[2].ShortCircuit	0		Decimal	BOOL
	- ENodeData[1].ETH_ENODE_1.Temperature[2].OpenCirc...	0		Decimal	BOOL
	- ENodeData[1].ETH_ENODE_1.Temperature[3]	{ ... }	{ ... }		NTC_Inputs
	- ENodeData[1].ETH_ENODE_1.Temperature[3].Temperat...	70.1		Float	REAL
	- ENodeData[1].ETH_ENODE_1.Temperature[3].ShortCircuit	0		Decimal	BOOL
	- ENodeData[1].ETH_ENODE_1.Temperature[3].OpenCirc...	0		Decimal	BOOL
	- ENodeData[1].ETH_ENODE_1.Temperature[4]	{ ... }	{ ... }		NTC_Inputs
	- ENodeData[1].ETH_ENODE_1.Temperature[4].Temperat...	72.2		Float	REAL
	- ENodeData[1].ETH_ENODE_1.Temperature[4].ShortCircuit	0		Decimal	BOOL
	- ENodeData[1].ETH_ENODE_1.Temperature[4].OpenCirc...	0		Decimal	BOOL



BUILD YOUR OWN DISPLAY!

Example of Graphical Display

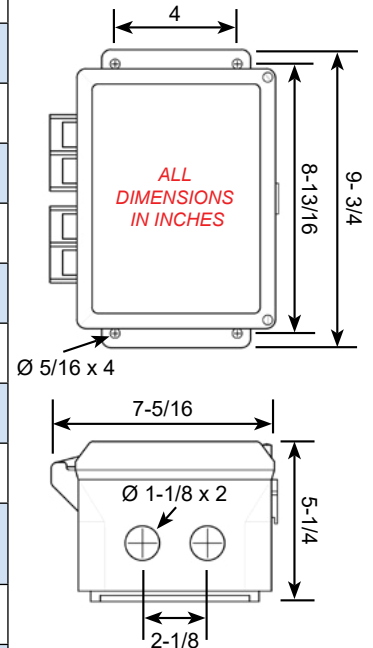
The IE-NODE has in-built network support for Hazardmon.com service connectivity. HazardMon is a secure cloud based hazard monitoring solution providing status notifications and data logging for bucket elevators and conveyors. Live system status, graphs and historical data can be viewed on any web-enabled device (smartphone, tablet PC, desktop or laptop computer).

To review all of the available features, and to see how the system works for yourself register for a free demo account at: www.hazardmon.com.



IE-NODE Versions 1 & 2

Supply Voltage	120 to 240 VAC / 24 VDC (ETH-NODE1V46C or ETH-NODE2V46C) 24 VDC (ETH-NODE1V4C or ETH-NODE2V4C)
Power Dissipation	12 Watts Maximum
Sensor Supply	24 VDC @ 800 mA (Across Fuse 1 - Fuse 4)
Power Terminals	14 AWG / 2.5 mm ²
Signal Terminals	14 AWG / 2.5 mm ²
PLC Communications	PROFINET, EtherNet/IP and Modbus TCP/IP
Height	9-3/4 in. (248 mm)
Width	7-5/16 in. (186 mm)
Depth	5-1/4 in. (134 mm)
Fixing Centers	8-13/16 x 4 in. (224 x 102 mm)
Cable Entry	2 Holes - 1-1/8 in. (28 mm) Diameter - 3/4 in. Conduit
Weight	2.5 lbs / 1.1 kg
Protection	IP66
Approvals	CSA Approved in the US and Canada for: Class II Div 1 Groups E, F, & G (ETH-NODE1V4C, ETH-NODE2V4C & ETH-SWITCH1V4C-5P) Class II Div 2 Groups F & G (ETH-NODE1V46C & ETH-NODE2V46C) ATEX & CE (Versions Available)




Rockwell Automation
SIEMENS

For more information and a quote for your monitoring application, contact 4B today!

www.go4b.com/usa

 **4B COMPONENTS LTD.**
625 Erie Avenue
Morton, IL 61550
USA
Tel: 309-698-5611
Fax: 309-698-5615

 **4B BRAIME COMPONENTS LTD.**
Hunslet Road
Leeds
LS10 1JZ
United Kingdom
Tel: +44 (0) 113 246 1800
Fax: +44 (0) 113 243 5021

 **4B DEUTSCHLAND**
35 bis, rue du 8 mai 1945
Villers Bretonneux
F-80800
France
Tel: +49 (0) 2333 601681

 **4B ASIA PACIFIC**
Build No.899/1 Moo 20
Soi Chongsiri, Bangplee-Tam Ru Road,
Tanbon Bangpleeyai, Amphur Bangplee,
Samutprakarn 10540
Thailand
Tel: +66 (0) 2 173-4339
Fax: +66 (0) 2 173-4338

 **4B FRANCE**
35 bis, rue du 8 mai 1945
Villers Bretonneux
F-80800
France
Tel: +33 (0) 3 22 42 32 26

 **4B AFRICA**
14 Newport Business Park
Mica Drive, Kya Sand
2163 Johannesburg
South Africa
Tel: +27 (0) 11 708 6114
Fax: +27 (0) 11 708 1654

 **4B AUSTRALIA**
Building 1, 41 Bellick St,
Acacia Ridge 4110,
Queensland
Australia
Tel: +61 (0) 7 3216 9365
Fax: +61 (0) 7 3219 5837

 **4B CHINA**
F1, Building 5A,
8 West Lake Road Wujin High &
New Technology Development Zone,
Changzhou 213164
Jiangsu Province, China
Tel: +86-136 0160 9266

4B®, Whirligig® and HazardMon.com® are registered trademarks of 4B Components Ltd., a subsidiary of T.F. & J.H. BRAIME (HOLDINGS) P.L.C.

FOT, Hotbus, Watchdog, Mag-Con, SpeedMaster, Auto-Set, Roto-Safe, Roto-Switch, and Touchswitch are trademarks of 4B, a subsidiary of the Braime Group PLC

Rockwell Automation, ControlLogix, CompactLogix, and Siemens are ® registered trademarks. Brand or product names are used to identify products and services of their respective owner.

Copyright 2022 © 4B Components Ltd. All rights reserved.

Information is subject to change or modification without notice.
LPN - 4BUSAO24
RD031622