

COMBINED MONITORING SYSTEMS

T500 ELITE - HOTBUS



Serial network system for continuous monitoring of bearing temperature, belt misalignment, and more

The **T500 Elite - Hotbus™** is a serial communication system specially designed to monitor up to 256 sensors, including continuous bearing temperature and belt misalignment. With automatic machine shutdown capability and PLC/PC compatibility this advanced microprocessor based system offers low cost installation, versatility and easy system expansion.

Features

- Continuous bearing temperature monitoring with user adjustable trip points
- RS485 serial communication
- Monitors up to 256 sensors
- 4 second scan time with 256 sensors installed
- Works with many types of sensors
- Enter your own sensor/location names for easy identification
- Alarm and shutdown features
- Gateways available for various PLC connections
- HazardMon.com® cloud based hazard monitoring compatible

Sensor options

- ADB, MDB, and WDB: bearing temperature
- Touchswitch: belt alignment
- P3003V34AI + SN2 Node: speed
- Autoset Series: level indicator
- Roto-Level Series: level indicator
- Binswitch: level and plug indicator

Input supply voltage

- 100 to 240 VAC
- 24 VDC (universal supply)

Sensor supply

- Use external 24 VDC supply

Approvals

- Europe – ATEX
- USA, Canada – CSA
- Brazil - InMetro
- China - Nepsi
- Worldwide – IECEx

H x W x D

- 246 x 188 x 102mm

Applications

- Bucket elevators and conveyors



HazardMon.com®

HazardMon.com® is a secure cloud based hazard monitoring solution providing status notifications and data logging for bucket elevators and conveyors. Live system status, graphs and historical data can be viewed on any web-enabled device (smartphone, tablet PC, desktop or laptop computer). Emails can be sent to notify users whenever a change in the system's health is detected. An automated maintenance feature allows site operators to verify that all sensors on the system are operational and working correctly.



F500 Elite Fieldbus Gateway

The F500 is a communications gateway that allows for single point access to a maximum of four T500 Elite Hotbus™ systems via Fieldbus protocol. Fieldbus communication protocols supported include: Ethernet IP, Modbus TCP, Modbus RTU, DeviceNet, Profibus and others.



R500 Elite Alarm Relay Interface

The R500 is a microprocessor-controlled unit, which accepts signals from the T500 Elite Hotbus™ monitor, and is able to cause alarm or shutdown of equipment when a sensor exceeds its programmed alarm tolerance.



Hotbox Node – TN4 (Input Node)

The TN4 is a four input sensor node, powered by 24 VDC. Each input can be an NTC thermistor, PTC thermistor or Volt-Free Contact input; the types may be interchanged on a single node. The Node has a unique 4 digit address which is used to communicate to the T500 via a two wire serial RS485 connection. The TN4 Node processes information from electrical inputs into network data inputs for ADB, WDB, Binswitch or Touchswitch.



Hotbox Node – SN2 (Speed Node)

The SN2 is a two input speed node, powered by 24 VDC. The node is able to monitor two independent pulse (speed) sources for dangerous under speed conditions. The SN2 will support pulses which are PNP or sourced. The Node has a unique 4 digit address which is used to communicate to the T500 via a two wire RS485 connection. The SN2 processes information from electrical inputs into network data.



Hotbus™ Node Tester

The Hotbus Node Tester is a portable testing unit that can be used in the field to determine the operational status of any Hotbus communications node and network to quickly identify wiring or node issues.

Simply plug the network connection cable directly to the node. A digital display on the tester will show the status of the node which can determine if the node is operating correctly.



CLOUD-BASED HAZARD MONITORING

HAZARDMON



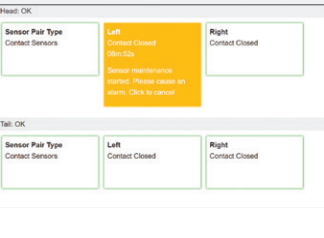
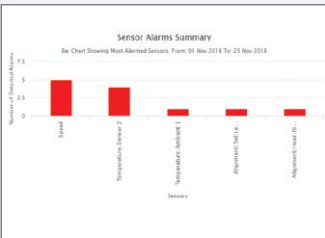
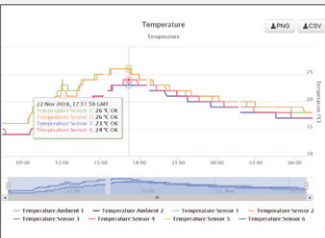
HazardMon.com® is a secure cloud based hazard monitoring solution providing status notifications and data logging for bucket elevators and conveyors. Live system status, graphs and historical data can be viewed on any web-enabled device (smartphone, tablet PC, desktop or laptop computer). Emails can be sent to notify users whenever a change in the system's health is detected. An automated maintenance feature allows site operators to verify that all sensors on the system are operational and working correctly.

Features

- Secure Cloud Based Hazard Monitoring
- Works with T500 Elite Hotbus™ & Watchdog Super Elite
- Data Logged Automatically
- Real Time System Status & Alert Email Notifications
- Automated Maintenance
- View on Any Web-Enabled Device

Register For A Free Demo Account
www.hazardmon.com
See What The Cloud Can Do For You!

HazardMon.com® enables the WDC4 and T500 systems to become Industry 4.0 enabled. It offers real-time visualization and notifications for connected users anywhere in the world. All the data is collected with a two second latency and everything is saved for historical analysis.



Live View

Real-time remote view of your factory from anywhere in the world. Support mobile and desktop views. Data is dynamically updated and presented in most efficient view for operators and managers to understand.

Data Charting

Any sensor data can be charted in a matter of two clicks. Time range is selectable between 1h and 30 days. There is also a live chart function for real-time maintenance of site.

Data Analysis

Comprehensive reports for the management to make quick data-driven decisions. With the help of Hazardmon analytics factory management can make maintenance budgeting decisions in matter of minutes. All the Hazardmon reports are exportable and can be easily incorporated into internal health and safety and performance reports.

Automated Maintenance

Completely automated sensor testing process, which allows factory maintenance staff and management to comply with the annual or bi-annual test schedule. Just click on a sensor which needs testing, cause and alarm and clear the alarm. All of the conditions are logged along with the sensor location, name, operator full name, date and time, as well as the test outcome. The maintenance report can then be easily generated and exported in .CSV format.

Continuous Improvements

Hazardmon is updated several times a year with feedback from existing and new customers driving the changes. There is a constant flux of new industry-leading features. Hazardmon together with the innovative sensing solutions allows 4B Group to stay a technology and solutions leader in the industry and at the forefront of Industry 4.0 and IoT research.



For more detailed product information, please visit: www.go4b.com

